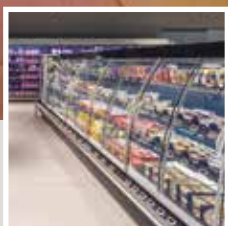




**REMIS**  
www.remis.de



Quality based on over 40 years of experience in the development and production of radiation-reflective materials



## Product catalogue 2017/2018

### REMIS is your specialist for:

- Glass doors for refrigerated wall multidecks
- Glass covers for refrigeration and chest freezers
- Accessories for refrigeration cabinets: LED lighting, impact protection, price strips etc.

# Pioneer, developer and forward thinker

Whether for refrigerated wall multidecks or refrigeration and chest freezers, with REMIS you get more than 40 years of experience in the development of radiation-resistant materials, attractive, low-resource and flexibly adjustable covers for all standard refrigeration cabinet types. REMIS glass covers and insulating glass doors are an investment in cost effectiveness, climate protection customer acceptance and the future!

## Attractive and contemporary

REMIglas enables premium, modern and cost-effective goods displays. With REMIglas you can offer your customers optimally refrigerated products. The appealing design of the easy-to-use glass covers results in an attractive look and an inviting shopping atmosphere.

## Profitable and climate-friendly

With REMIglas you can save up to 77% of refrigeration costs. This lowers CO<sub>2</sub> pollution and your costs. Moreover, it enables you to actively support climate protection which, in turn, has a positive effect on your reputation. The glass covers pay for themselves within a short space of time thanks to reduced electricity expenses.



An entrepreneurial family in its second generation:  
Ralf Toschek, Ulrich Toschek, Karin Schick



Made in Germany: Development  
and production in Germany



# Discover the world of REMIS

## REMIS - the company

- Where does REMIS come from and who are we? ..... 4 - 5
- REMIS subsidiaries: Production and sales sites ..... 6

## Heat transfer coefficient: Ug value ..... 7

## REMIglas glass door product overview ..... 8 - 9

### Glass doors for refrigerated wall multidecks

- *Safe TT*: High-transparency insulating glass hinged door for a crystal clear view ..... 10 - 11
- *Safe Tmax*: High-transparency insulating glass hinged door for an unobstructed view ..... 12 - 13
- *SafeFlex*: Maximum flexibility for individual requirements ..... 14 - 15
- *Safe TS*: A clear view with a single glazed hinged door module ..... 16 - 17
- *Shelf*: Automatically closing glass sliding door for refrigerated multidecks ..... 18 - 19
- *ShapeFlex Curve*: Elegant insulating glass sliding door with curved panes ..... 20 - 21
- *Product comparison*: Glass doors for refrigerated wall multidecks ..... 22 - 23

## REMIglas glass cover product overview ..... 24 - 25

### Glass covers for refrigeration and chest freezers

- *EcoFlex Push*: Stable modular glass cover ..... 26 - 27
- *EcoFlex Push T*: Transparent glass cover for single-unit refrigerators and chest freezers ..... 28 - 29
- *EcoFlex Push 3*: Pane (divided into 3) for the largest possible opening ..... 30 - 31
- *EcoFlex Push Combi*: Glass cover for combination refrigerated cabinets with vertical slide ..... 32 - 33
- *EcoFlex Slide*: Frameless glass cover for a premium look ..... 34 - 35
- *EcoFlex Slide Combi*: Glass cover for combination refrigerated cabinets with horizontal slide .. 36 - 37
- *Quick*: Glass cover for plug-in refrigerators and chest freezers. .... 38 - 39
- *Product comparison*: Glass covers for refrigeration and chest freezers ..... 40 - 41

### REMIS accessories for refrigeration cabinets and glass covers

- Handles for glass doors (refrigerated wall multidecks) ..... 42 - 43
- Handles for glass covers (low refrigerated multidecks, refrigeration and chest freezers) ..... 44 - 45
- LED lighting for refrigerated multidecks and refrigeration and chest freezers ..... 46 - 47
- EcoFlex 3-fold price strips from REMIS ..... 48
- Rail protection: Impact protection for refrigerated multidecks, chests and shelves ..... 49
- REMIglas care agents and REMIS bag holders ..... 50

## Social commitment - REMIS actively helps! ..... 51

# REMIS - REFlektion Mit ISolation

## Your partner for smart ideas

### Engineering expertise "MADE IN GERMANY"

REMIS stands for more than 40 years of engineering know-how, innovative power and creativity in the development of intelligent solutions and their implementation into functional products.

As an owner-managed medium-

sized company which is now in its second generation, our actions are shaped by a sense of social responsibility vis-à-vis our staff and customers, this is characterised amongst other things by the development of low-resource products.

The constructive and trusting cooperation with manufacturers and customers guarantees innovative

product solutions with an individual flair both today and in the future – true to our slogan: Innovation inspired by tradition.

The business areas REMIglas and REMImobil have their own development departments with state-of-the-art technology (3D CAD systems, endurance test benches, climate chambers, prototype etc.).

## REMIS stands for:



A strong tradition as a family-run company dating back more than 40 years.



Growth driven by innovative product ideas



International sales and service



Development and production in Germany



Sustainability and environmental protection based on the careful use of materials



Social responsibility: REMIS Health Centre e.V. in Gambia



# Who we are: REMIS at a glance



# REMIS subsidiaries

## Production and sales sites

www.remis.de



REMIS in Cologne, Germany

REMIS in Gronau, Germany

### REMIS sites in Germany

#### Development site in Cologne

- ✓ Headquarters of REMIS GmbH
- ✓ R&D, Sales, Administration
- ✓ Prototyping and Small-Scale Series

#### Production site in Gronau-Epe

- ✓ Plant 1: Vehicle components
- ✓ Plant 2: Glass covers / door systems
- ✓ Plant 3: Vehicle glazing

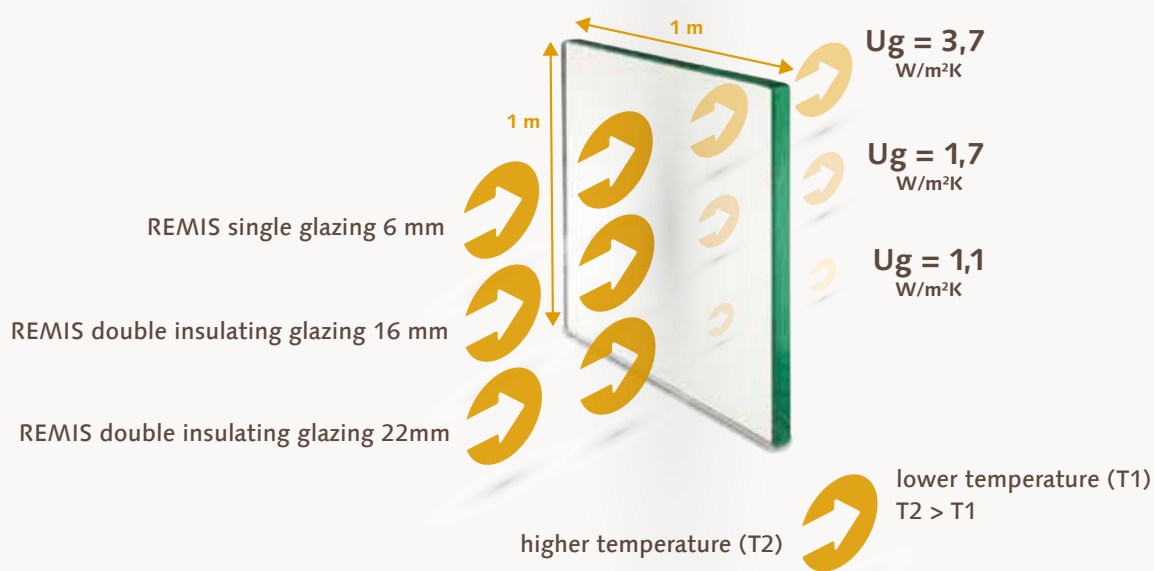
### REMIS international sales offices

- Australia
- Benelux
- Germany
- Estonia
- France
- Greece
- Great Britain
- Italy
- Kazakhstan
- Colombia
- Latvia
- Lithuania
- Norway
- Austria
- Poland
- Portugal
- Russia
- Sweden
- Switzerland
- Spain
- Hungary
- Ukraine
- USA
- Belarus

# Heat transfer Ug as per EN 673 (W/m<sup>2</sup>K)



Ug value - maximum energy efficiency with REMIS



## Heat transfer Ug: The energy efficiency indicator

The Ug value determines energy loss through the glass pane as per EN 673.

The lower the Ug value, the lower the energy loss due to heat transmission through the glass.

The Ug value is measured in W/m<sup>2</sup>K, which refers to watts per square

metre and kelvin.

Our premium REMIS glass panes have Ug values as low as 1.1 W/m<sup>2</sup>K.

# REMIS - product overview

## Refrigerated wall multidecks

### REFRIGERATED WALL MULTIDECKS

#### Hinged doors

- Opening mechanism
- Glazing
- Catalogue pages



#### Safe TT

Hinged door  
Insulating glass 22 mm  
10 - 11



#### Safe TS

- Opening mechanism
- Glazing
- Catalogue pages

Hinged door  
Single glazing 6 mm  
16 - 17

\* Energy savings as per DIN EN 23953 and also depending on the refrigeration cabinet type, refrigeration system, and number of times the cabinet is opened etc.





50%  
-77%\*

### SafeT max

Hinged door  
Insulating glass 22 mm  
12 - 13



50%  
-77%\*

### SafeFlex

Hinged door  
Insulating glass 22 mm  
14 - 15



50%  
-72%\*

### Shelf

Sliding door  
Insulating glass 22 mm  
18 - 19



45%  
-50%\*

### ShapeFlex Curve

Sliding door  
Insulating glass 16 mm  
20 - 21

# Glass doors for refrigerated wall multidecks: Safe TT

## The advantages at a glance

- Maximum transparency with glass spacers
- Maximum energy savings -> Low-e (R 1.1\*)
- We also offer complete systems for cold stores:  
Energy-saving glass doors and efficient goods displays from a single source.  
-> Contact us!



## Safe TT - a crystal-clear display for your goods

### Technical data

Frame height	1200 mm - 2000 mm
Module length	Standard: 1250 mm (2-door), 1875 mm (3-door) other grid lengths available
Panes	Insulating glass 22 mm (2x single-pane safety glass), Ug value 1.1*
Climate class	3 (25°C/60% r.h / from 4°C)
Colours	Door and frame profiles top/bottom in <span style="background-color: #808080; color: white; padding: 2px;">RAL 7004</span> <span style="background-color: #1a1a1a; color: white; padding: 2px;">RAL 7016</span>
Handles	See overview on pages 42/43
Closing system	Less than 90° automatically closing
Lighting	LED available in 3 colours: Neutral white, paste/cheese, meat colour
Pane version optional	3 anti reflex + 1x low-e, R 1.1 and reflection 3%
Optionally available	Door hinge on one side,

\* The lower the Ug value, the greater the energy savings

\*\* As per DIN EN 23953 and also depending on the refrigeration cabinet type, refrigeration system, and number of times the cabinet is opened etc.


**55%<sup>\*\*</sup>**  
**to 77%<sup>\*\*</sup>**  
 ENERGY SAVINGS



Safe TT

**Safe TT: High-transparency insulating glass hinged door for a crystal clear view**

Safe TT is a two-leaf insulating glass door module with variable dimensions for the initial fitting and retrofitting of refrigerated multidecks.

It stands out due to its exceptional transparency thanks to the use of glass spacers. Additional features include the exceptional visibility and even refrigeration. Simple operation and easy cleaning and the premium stainless steel look handles round off the Safe TT.

Energy savings of up to 77% mean the investment pays for itself within a short space of time. Compliance with the refrigeration temperatures is guaranteed together with low CO<sub>2</sub> emissions.

# Glass doors for refrigerated wall multidecks: Safe Tmax

## The advantages at a glance

- Maximum transparency thanks to narrow glass surround
- Even refrigeration
- We also offer complete systems for cold stores:  
Energy-saving glass doors and efficient goods displays from a single source.  
-> Contact us!



## Safe Tmax - excellent visibility combined with even refrigeration

Technical data	
Frame height	1200 mm - 2000 mm
Module length	Standard: 1250 mm, 1875 mm; other grid lengths available
Panes	Insulating glass 22 mm (2x single-pane safety glass), Ug value 1.1*
Climate class	3M1 (25°C/60% r.h /-1°C to + 5°C)
Colours	Frame and door profiles in <span style="background-color: #808080; color: white; padding: 2px;">RAL 7004</span> <span style="background-color: #1a3d4d; color: white; padding: 2px;">RAL 7016</span>
Handles	See overview on pages 42/43
Closing system	Less than 90° automatically closing
Lighting	LED available in 3 colours: Neutral white, paste/cheese, meat colour
Pane version optional	1x low-e (R 1.1); 3 anti reflex + 1x low-e (R 1.1)
Optionally available	Door hinge on one side,

\* The lower the Ug value, the greater the energy savings

\*\* As per DIN EN 23953 and also depending on the refrigeration cabinet type, refrigeration system, and number of times the cabinet is opened etc.



**Safe Tmax: High-transparency insulating glass hinged door for an unobstructed view**

*Safe Tmax* is a two-leaf insulating glass door module with variable dimensions for the initial fitting and retrofitting of refrigerated multidecks.

The glass door offers exceptional visibility for optimal goods displays and even refrigeration. The large opening makes use and cleaning child's play.

Premium stainless steel look handles with stop dampers round off the

*Safe Tmax* profile (page 48/49).

Energy savings of up to 77% mean the investment pays for itself within a short space of time. Compliance with the refrigeration temperatures is guaranteed together with low CO<sub>2</sub> emissions.

# Glass doors for refrigerated wall multidecks: SafeFlex

## The advantages at a glance

- Uniform door -> customised use
- Minimum spare parts requirements since, for example, the right door can also be used on the left
- Can be installed in the opening or without a canopy panel up to the top of the cabinet
- Can be customised to meet your specifications



## SafeFlex - maximum flexibility for individual requirements

### Technical data

Frame height	1200 mm - 2000 mm
Module length	Standard: 1250 mm, 1875 mm; other grid lengths available
Panes	Insulating glass 22 mm (2x single-pane safety glass), Ug value 1.1*
Climate class	3M1 (25°C/60% r.h /-1°C to + 5°C)
Colours	Frame profiles as per configuration
Handles	As per configuration (see overview on pages 42/43)
Closing system	Less than 90° automatically closing
Lighting	LED available in 3 colours: Neutral white, paste/cheese, meat colour
Pane version optional	As per configuration

\* The lower the Ug value, the greater the energy savings

\*\* As per DIN EN 23953 and also depending on the refrigeration cabinet type, refrigeration system, and number of times the cabinet is opened etc.


**SafeFlex Basic**

**SafeFlex Comfort / Premium**

**SafeFlex Comfort / Premium**


## SafeFlex - options / configuration overview

Options	Basic	Comfort	Premium
Opening	Manual	Manual	Electric
Opening limitation	X	X	X
Closing system automatically	X	X	X
Insulating glass 22 mm with conventional spacers (Safe Tmax)	X	X	
Insulating glass 22 mm with highly transparent glass spacers (Safe TT)		X	X
1x low-e	X	X	X
3x anti reflex + 1x low-e		X	X
Handle	Plastic	High-quality metal handle	High-quality metal handle
Colour	RAL 7004	RAL 7004	RAL 7004
		RAL 7016	RAL 7016

# Glass doors for refrigerated wall multidecks: Safe TS

## The advantages at a glance

- Compromise between maximum transparency and energy savings
- With finger protection developed according to DIN EN ISO 13857
- Metallised safety glass for a radiation-resistant surface and a clear view



## Safe TS - a clear view with a single glazed hinged door module

### Technical data

<b>Frame height</b>	1200 mm - 2000 mm
<b>Module length</b>	Standard: 1250 mm (2-door), 1875 mm (3-door); other grid lengths available
<b>Panes</b>	Single glazing 6 mm (single-pane safety glass)
<b>Climate class</b>	Not suitable for 3M1
<b>Colours</b>	Frame profiles silver anodised
<b>Handles</b>	Handle rings in grey <b>RAL 7004</b> or bow handle (see overview on pages 42/43)
<b>Closing system</b>	Less than 90° automatically closing
<b>Lighting</b>	LED shelf lighting and canopy lighting available in 3 colours: Neutral white, paste/cheese, meat colour
<b>Optionally available</b>	Door hinge freely selectable

\* The lower the Ug value, the greater the energy savings

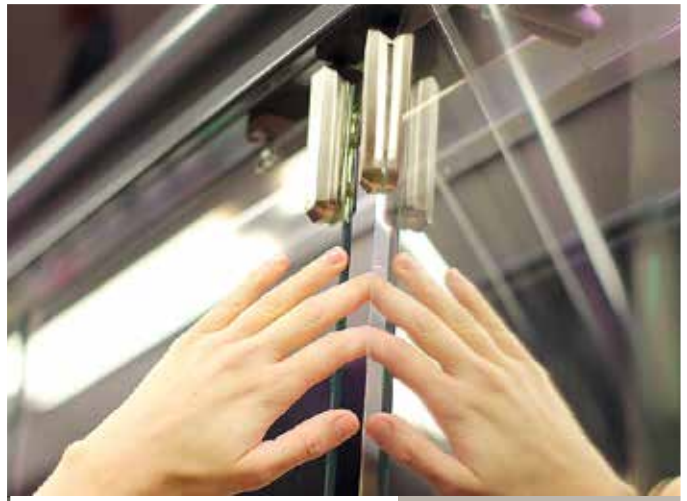
\*\* As per DIN EN 23953 and also depending on the refrigeration cabinet type, refrigeration system, and number of times the cabinet is opened etc.




**30%<sup>\*\*</sup>**  
**to 45%**  
 ENERGY SAVINGS



Safe TS



**Safe TS: Single glazed hinged door module**

Safe TS is a two-leaf, single glazed hinged door module without a frame and represents a compromise between maximum transparency and energy savings.

Finger protection developed according to DIN EN ISO 13857 guarantees the necessary safety when using the door.

The doors are made of metallised safety glass and are radiation-reflective and clear.

The door hinge and the grip hole or stainless steel look handle option can be freely selected.

Energy savings of up to 45% mean the investment pays for itself within a short space of time.

# Glass doors for refrigerated wall multidecks: Shelf

## The advantages at a glance

- Ideal for narrow aisles as the sliding system saves space
- Closes automatically at an ideal speed
- Modern goods displays, ideal visibility and even refrigeration



## Shelf - automatically closing sliding glass doors

### Technical data

Frame height/depth	1200 mm - 2000 mm / 65 mm
Grid dimension	625 mm
Module length	Standard: 1875 mm (4-door), 2500 mm (4-door), 3750 mm (6-door); other grid lengths available; 3-door option not possible
Panes	Insulating glass 22 mm (2x single-pane safety glass), Ug value 1.1**
Climate class	3M1 (25°C/60% r.h /-1°C to + 5°C)
Colours	Frame and door profiles in <b>RAL 7004</b> <b>RAL 7016</b>
Closing system	Automatically closing, soft-close (Basic/Comfort); electrical closing (Premium)
Lighting	LED available in 3 colours: Neutral white, paste/cheese, meat colour
Pane version optional:	Insulating glass 22 mm with conventional spacers (Basic) or insulating glass 22 mm with highly transparent glass spacers (Comfort/Premium)

\* The lower the Ug value, the greater the energy savings

\*\* As per DIN EN 23953 and also depending on the refrigeration cabinet type, refrigeration system, and number of times the cabinet is opened etc.



**Shelf: Automatically closing glass sliding door for refrigerated multi-decks**

*Shelf* is a proven REMIS glass door sliding system and is extremely well suited to retrofitting.

Since it is compact it is ideal for use in narrow aisles. Further features include great visibility, even refrigeration as well as simple locking, operation and cleaning.

To clean, the doors can be slid past each other and the flat frame pro-

files in the lower section make for easy maintenance.

Optimal finger protection, a soft end stop with soft retraction and a weightless closing system for easy door closing round off the *Shelf* door profile.

# Glass doors for refrigerated wall multidecks: ShapeFlex Curve

## The advantages at a glance

- Large opening width, easy to use and clean
- Dynamic, premium design for inviting goods displays
- No condensation formation and high energy savings thanks to insulating glazing



## ShapeFlex Curve - insulating glass sliding door with curved panes

### Technical data

Grid dimension	625 mm	
Width	1250 mm - 3750 mm (1875 mm also 2 door); display shelf on request	
Panes	Insulating glass 16 mm (2x single-pane safety glass), Ug value 1.7*	
Climate class	3M1 (25°C / 60% r.h /-1°C to + 5°C)	
Colours	Frame profiles made from anodised aluminium	<span style="background-color: #cccccc; padding: 2px;">RAL 7004</span> <span style="background-color: #333333; color: white; padding: 2px;">RAL 7016</span>
Closing system	Manual	
Lighting	LED shelf lighting and head lighting (canopy) available in 3 colours: Neutral white, paste/cheese, meat colour	

\* The lower the Ug value, the greater the energy savings

\*\* As per DIN EN 23953 and also depending on the refrigeration cabinet type, refrigeration system, and number of times the cabinet is opened etc.

**45%<sup>\*\*</sup>**  
**to 50%**  
 ENERGY SAVINGS



# ShapeFlexCurve

**ShapeFlex Curve: Elegant insulating glass sliding door with curved panes**

*Shape Flex Curve* is an elegant insulating glass cover for low refrigerated multidecks. The dynamic design with

curved panes ensures a high-quality display for goods.

At the same time, the large opening width makes cleaning and using the cabinets simple.

The high-quality insulating glazing guarantees maximum energy savings and no condensation.

Energy savings of up to 50% mean the investment pays for itself within a short space of time.

# Product comparison

## Glass doors for refrigerated wall

	Safe TT	Safe Tmax (also for cold storage cells)	Safe Flex (various versions)
<b>Profiles / colours</b>	Door profiles top/bottom in RAL 7004 RAL 7016	Frame and door profiles in RAL 7004 RAL 7016	RAL 7004 Comfort & Premium: RAL 7004 RAL 7016
<b>Handles</b>	glued-on handles in stainless steel look (cryogenically decoupled)	glued-on handles in stainless steel look (cryogenically decoupled)	Basic: Grey plastic Comfort & Premium: Stainless steel
<b>Adjustment</b>	plus assembly kit		
<b>Frame height</b>	1200 - 2000 mm	1200 - 2000 mm	1000 - 2000 mm
<b>Module length/width</b>	Standard: 1250 mm, 1875 mm, other grid lengths available	Standard: 1250 mm, 1875 mm other grid lengths available	Length based on 625 mm grid
<b>Cabinet design</b>	straight side wall, flush with front edge of cabinet (no bumper), no gap to frame, internal lighting in canopy*		
<b>Lighting</b>	LED - vertical and horizontal available in 3 colours: Neutral white, paste/cheese, meat colour		
<b>Required cabinet condition</b>	perpendicular and level, without damage		
<b>Standardised pane version</b>	Single-pane safety glass with double insulating glazing and 1x low-e coating -> All-glass (glass spacers)	Single-pane safety glass with double insulating glazing and 1x low-e coating	Single-pane safety glass with double insulating glazing and 1x low-e coating (Comfort & Premium with all-glass)
<b>Optional pane version</b>	3x anti reflex + 1x low-e (R 1.1) 4x anti reflex (R 2.6)	3x anti reflex + 1x low-e (R 1.1) 4x anti reflex (R 2.6)	In Comfort & Premium versions 3x anti reflex + 1x low-e (R 1.1), All-glass (glass spacers)
<b>Glass structure***</b>	22 mm insulating glass: Single-pane safety glass 4 mm; Pane clearance 14 mm argon gas; Single-pane safety glass 4 mm		
<b>Heat transfer (EN 673) Ug value***</b>	1.1 W/m <sup>2</sup> K	1.1 W/m <sup>2</sup> K	1.1 W/m <sup>2</sup> K
<b>Condensation forms at 60% r. h and a room temperature of:***</b>	+ 30.5°C**	+ 30.5°C**	+ 30.5°C**
<b>Dew point***</b>	+ 21.6°C**	+ 21.6°C**	+ 21.6°C**
<b>Emissivity***</b>	0.03	0.03	0.03
<b>Total reflection***</b>	13%	13%	13%
<b>Transparency***</b>	80%	80%	80%
<b>Climate class</b>	3 (25°C / 60% r. h / from 4°C)	3M1 (25°C / 60% r. h/ -1°C to + 5°C)	3M1 (25°C / 60% r. h/ -1°C to + 5°C)
<b>Closing system</b>	Less than 90° automatically closing	Less than 90° automatically closing	90° automatically closing Basic & Comfort: manual Premium: electrical (Comfort with opening limitation)
<b>Energy savings</b>	<b>50 - 77%</b>	<b>50 - 77%</b>	<b>50 - 77%</b>

\* Other designs and states possible for an additional charge

\*\* As per DIN EN 23953 and also depending on the refrigeration cabinet type, refrigeration system, and number of times the cabinet is opened etc.

\*\*\* The values refer to the standard pane version

# multidecks

Safe TS	Shelf	Curve
Assembly profile: Anodised fastening <b>RAL 7004</b>	Door profiles in <b>RAL 7004</b> <b>RAL 7016</b>	Frame profile from anodised aluminium; Pane surround in <b>RAL 7004</b> <b>RAL 7016</b>
handle ring in <b>RAL 7035</b> , alternative bow handle	full-length handle bar	narrow handle in <b>RAL 7035</b>
plus assembly kit		-
1200 - 2000 mm	1200 - 2000 mm	-
Standard: 1250 mm, 1875 mm, other grid lengths available	Standard: 1250 mm, 1875 mm, other grid lengths available	Length based on 652 mm grid. Width: 1250 mm - 3750 mm (end shelf on request)
straight side wall, flush with front edge of cabinet (no bumper), no gap to frame, internal lighting in canopy*		straight side wall flush with front edge of cabinet (without bumper), no gap to frame
shelf and canopy lighting possible: Neutral white, paste/cheese, meat colour	LED - vertical and horizontal: Neutral white, paste/cheese, meat colour	LED shelf lighting
perpendicular and level, without damage		perpendicular and level, without damage with functioning heaters
Single-pane safety glass with single glazing and a low-e coating	Single-pane safety glass with double insulating glazing and a low-e coating	
-	3x anti reflex + 1x low-e (R 1.1) 4x anti reflex (R 2.6)	3x anti reflex + 1x low-e (R 1.7) 4x anti reflex (R 2.6)
Single glazing 6 mm (single-pane safety glass)	22 mm insulating glass: 4 mm ESG; 14 mm argon gas; 4 mm ESG	16 mm insulating glass: 4 mm ESG; 8 mm argon gas; 4 mm ESG
3.7 W/m <sup>2</sup> K	1.1 W/m <sup>2</sup> K	1.7 W/m <sup>2</sup> K
+ 21.5°C**	+ 29.5°C**	+ 29.5°C**
+ 14°C**	+ 20.5°C**	+ 20.5°C**
0.18	0.03	
11%	13%	
81 %	80 %	
not suitable for 3M1	3M1 (25°C / 60% r. h/ -1°C to + 5°C)	
90° automatically closing	automatically closing, soft-close (electric)	manual
<b>30 - 45%</b>	<b>50 - 77%</b>	<b>45 - 50%</b>

# REMIS - product overview

## Refrigeration and chest freezers

### REFRIGERATION & CHEST FREEZERS

Push (vertical slide)

- Opening mechanism
- Glazing
- Catalogue pages



#### EcoFlex Push

Vertical system  
Single glazing 4 mm  
26 - 27



#### EcoFlex Push T

Vertical system  
Single glazing 4 mm  
28 - 29

### REFRIGERATION AND CHEST FREEZERS

Slide (right / left)

- Opening mechanism
- Glazing
- Catalogue pages



#### EcoFlex Slide

Horizontal system  
Single glazing 4 mm  
34 - 35

\* Energy savings as per DIN EN 23953 and also depending on the refrigeration cabinet type, refrigeration system, and number of times the cabinet is opened etc.





**EcoFlex Push 3**

Vertical system  
Single glazing 4 mm  
30 - 31



**EcoFlex Push Combi**

Vertical system  
Single glazing 4 mm  
32 - 33



**EcoFlex Slide Combi**

Horizontal system  
Single glazing 4 mm  
36 - 37



**Quick**

Horizontal system  
Single glazing 4 mm  
38 - 39

# Glass covers for refrigeration and chest freezers: EcoFlex Push

## The advantages at a glance

- Large opening -> Several customers can serve themselves simultaneously
- Modern goods display with a high level of transparency and even refrigeration
- Radiation-reflective hard coating which also prevents condensation from forming



## EcoFlex Push - smooth-running with a very large opening

Technical data	
<b>Cabinet type</b>	Floor cabinet, wall cabinet and end cabinet
<b>Cover width</b>	1700 mm - 2300 mm
<b>Cabinet length</b>	1875 mm, 2500 mm, 3750 mm (grid 625 mm)
<b>Panes</b>	4 mm single-pane safety glass
<b>Glass type</b>	Floor cabinet curved, end cabinet flat
<b>Opening dimensions</b>	1200 mm x (350 mm - 450 mm)
<b>Climate class</b>	3L1 (25°C / 60% r.h. / -18°C)
<b>Handrail profiles</b>	All-round aluminium handrail profile H = 65 mm
<b>Colours</b>	Price strip, handle and beading profile <b>RAL 7016</b>
<b>Lighting</b>	LED available in 2 colours: Neutral white and meat colour

\* As per DIN EN 23953 and also depending on the refrigeration cabinet type, refrigeration system, and number of times the cabinet is opened etc.

40%\*  
to 50%  
ENERGY SAVINGS



EcoFlex Push

**EcoFlex Push: Stable modular glass cover**

*EcoFlex Push* is a modern, stable, highly transparent glass cover for all-round glazing, double-width chest freezers and end and wall cabinets with a vertical slide with

centre bar.

The 4 mm-thick safety glass rules out the risk of injury from glass breakages and the large opening allows several customers to serve themselves simultaneously.

The radiation-reflective hard coating ensures a condensation-free view. The energy savings make this a worthwhile investment which quickly pays for itself.

# Glass covers for refrigeration and chest freezers: EcoFlex Push T

## The advantages at a glance

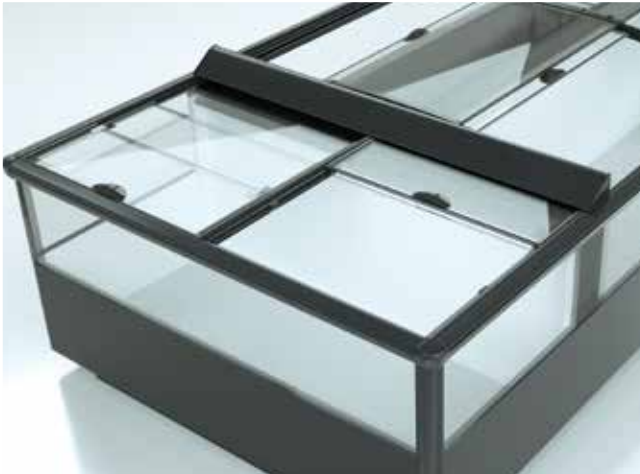
- Particularly large opening with rapid access from both sides
- Attractive look, ergonomic and extremely long-lasting
- Vertical slide, promotes sales and uncomplicated



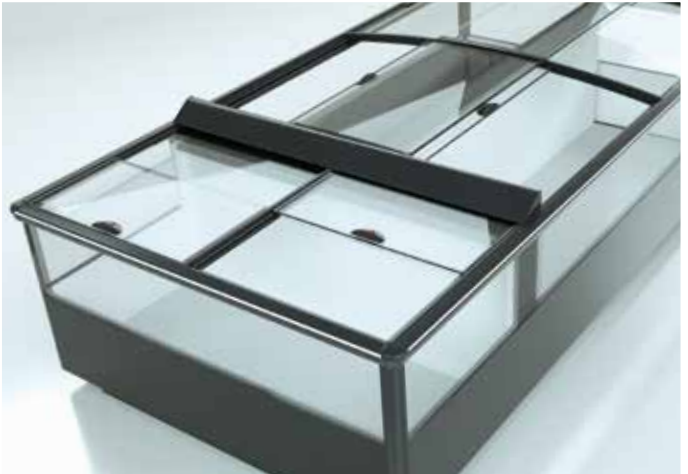
## EcoFlex Push T - large opening for access from both sides

Technical data	
Cabinet type	Floor cabinet and end cabinet
Cover width	1800 mm - 2100 mm
Cabinet length	1875 mm, 2500 mm, 3750 mm (grid 625mm)
Panes	4 mm single-pane safety glass
Glass type	Floor cabinet curved, end cabinet flat
Opening dimensions	1200 mm x (500 mm - 600 mm)
Climate class	3L1 (25°C / 60% r.h./-18°C)
Handrail profiles	All-round aluminium handrail profile H = 65 mm
Colours	Price strip, handle and beading profile <b>RAL 7016</b>
Lighting	LED available in 2 colours: Neutral white and meat colour

\* As per DIN EN 23953 and also depending on the refrigeration cabinet type, refrigeration system, and number of times the cabinet is opened etc.



EcoFlex Push 3 in head section (optional)



EcoFlex Push in head section (standard)



EcoFlex Push 3 in head section (optional)

**EcoFlex Push T: Transparent glass cover for retrofitting single refrigeration islands and chest freezers**

*EcoFlex Push T* is an ergonomic glass cover with a vertical slide.

An attractive and modern look combined with a large opening for access from both sides means uncomplicated use and cleaning and also promotes sales.

*EcoFlex Push T* is suitable for retro-

fitting single refrigeration islands and chest freezers and, given its high energy savings, pays for itself within a short space of time, making it a truly cost-effective investment.

# Glass covers for refrigeration and chest freezers: EcoFlex Push 3

## The advantages at a glance

- The largest possible opening in the EcoFlex Push product line thanks to the 3-part pane
- Optional LED lighting on the handrail and centre bar
- Vertical slide, promotes sales and uncomplicated



## EcoFlex Push 3 - 3-part pane for the largest possible opening

Technical data	
Cabinet type	Floor cabinet, wall cabinet and end cabinet
Cover width	1700 mm- 2300 mm
Cabinet length	1875 mm, 2500 mm, 3750 mm (grid 625 mm)
Panes	4 mm single-pane safety glass
Glass type	Floor cabinet curved, end cabinet flat
Opening dimensions	1200 mm x 600 mm
Climate class	3L1 (25°C / 60% r.h. / -18°C)
Handrail profiles	All-round aluminium handrail profile H = 65 mm
Colours	Price strip, handle and beading profile <b>RAL 7016</b>
Lighting	LED available in 2 colours: Neutral white and meat colour

\* As per DIN EN 23953 and also depending on the refrigeration cabinet type, refrigeration system, and number of times the cabinet is opened etc.



# EcoFlex Push 3

## **EcoFlex Push 3: Retrofittable transparent glass cover with pane divided into 3**

*EcoFlex Push 3* is a modern and attractive 3-part glass cover with offers a maximum opening and

access to the cabinet from both sides independently.

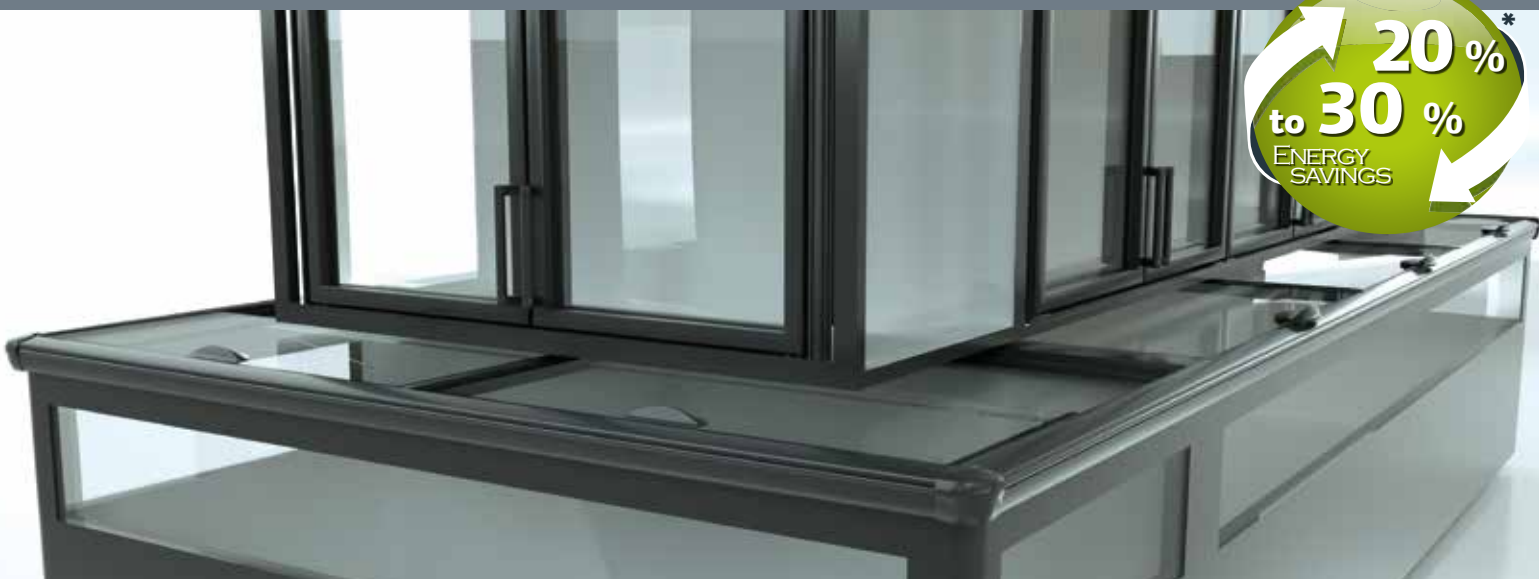
The vertical opening is easy to use, smooth-running and ensures simple access and user-friendly cleaning.

*EcoFlex Push 3* is suitable for retrofitting single and chest freezers and, given its high energy savings, pays for itself within a short space of time.

# Glass covers for refrigeration and chest freezers: EcoFlex Push Combi

## The advantages at a glance

- Especially narrow frame for sealing the space between the chest and the wall cabinet
- Attractive look, ergonomic and extremely long-lasting
- Vertical slide, promotes sales and uncomplicated



## EcoFlex Push Combi - glass cover for combination refrigeration cabinets

### Technical data

<b>Cabinet type</b>	Floor cabinet, wall cabinet and end cabinet
<b>Cover width</b>	800 mm - 1100 mm
<b>Cabinet length</b>	1875 mm, 2500 mm, 3750 mm (grid 625 mm)
<b>Panes</b>	4 mm single-pane safety glass
<b>Glass type</b>	Curved, flat
<b>Opening dimensions</b>	1200 mm x (300 mm - 350 mm)
<b>Climate class</b>	3L1 (25°C / 60 % r.h. / -18°C)
<b>Handrail profiles</b>	All-round aluminium handrail profile H = 65 mm
<b>Colours</b>	Handle and beading profile <b>RAL 7016</b>
<b>Lighting</b>	LED available in 2 colours: Neutral white and meat colour

\* As per DIN EN 23953 and also depending on the refrigeration cabinet type, refrigeration system, and number of times the cabinet is opened etc.





# EcoFlex Push Combi

## **EcoFlex Push Combi: Glass cover for combination refrigeration cabinets with vertical slide**

*EcoFlex Push Combi* closes the space between the wall unit and chest of combination cabinets using an

extremely flat frame design.

The vertical panes, available either as a curved or flat version, are smooth-running and easy to use and ensure quick access to products.

*EcoFlex Push Combi* pays for itself within a short space of time given its high energy savings, making it a truly cost-effective investment.

# Glass covers for refrigeration and chest freezers: EcoFlex Slide

## The advantages at a glance

- Frameless glass cover with a modern, high-quality look
- Optional LED lighting on the handrail and centre bar
- Very large opening for easy access and cleaning

Also available for retrofitting single refrigeration islands and chest freezers with widths of 0.90 - 1.10 m and 1.40 - 1.60 m



## EcoFlex Slide - frameless glass cover for a premium look

Technical data	
Cabinet type	Floor cabinet, wall cabinet and end cabinet
Cover width	1700 mm - 2300 mm
Cabinet length	1875 mm, 2500 mm, 3750 mm (grid 625 mm)
Panes	4 mm single-pane safety glass
Glass type	flat
Opening dimensions	550 x 800 mm
Climate class	3L1 (25°C / 60 % r.h. / -18°C)
Handrail profiles	All-round aluminium handrail profile H = 65 mm
Colours	Price strip, handle and beading profile <b>RAL 7016</b>
Lighting	LED available in 2 colours: Neutral white and meat colour

\* As per DIN EN 23953 and also depending on the refrigeration cabinet type, refrigeration system, and number of times the cabinet is opened etc.



# EcoFlex Slide

## **EcoFlex Slide: Frameless glass cover for a modern, premium look**

*EcoFlex Slide* is a frameless, modular system with right/left slide. The glass cover is designed for double-width chest freezers as well as their end and wall cabinets.

The extremely high-quality look, the ergonomic and long-lasting panes which retain their shape together with the even cooling are just some of the features of the *EcoFlex Slide* cover.

*EcoFlex Slide* pays for itself within

a short space of time given its high energy savings, making it a truly cost-effective investment.

# Glass covers for refrigeration and chest freezers: EcoFlex Slide Combi

## The advantages at a glance

- Frameless glass cover with a modern, high-quality look
- Optional LED lighting on the handrail and centre bar
- Very large opening for easy access and cleaning



## EcoFlex Slide Combi - glass cover for combination refrigeration cabinets

### Technical data

<b>Cabinet type</b>	Floor cabinet, wall cabinet and end cabinet
<b>Cover width</b>	300 mm - 1100 mm
<b>Cabinet length</b>	1875 mm, 2500 mm, 3750 mm (grid 625 mm)
<b>Panes</b>	4 mm single-pane safety glass
<b>Glass type</b>	flat
<b>Opening dimensions</b>	400 x 500 mm
<b>Climate class</b>	3L1 (25°C / 60 % r.h. / -18°C)
<b>Handrail profiles</b>	All-round aluminium handrail profile H = 65mm
<b>Colours</b>	Handle and beading profile <b>RAL 7016</b>
<b>Lighting</b>	LED available in 2 colours: Neutral white and meat colour

\* As per DIN EN 23953 and also depending on the refrigeration cabinet type, refrigeration system, and number of times the cabinet is opened etc.



**EcoFlex Slide Combi: Glass cover for combination refrigeration cabinets with horizontal slide**

*EcoFlex Slide Combi* closes the space between the wall unit and chest of combination cabinets

using an extremely flat frame design.

The horizontal sliding panes are extremely smooth-running and easy to use to enable quick access to goods.

*EcoFlex Slide Combi* pays for itself within a short space of time given its high energy savings, making it a truly cost-effective investment.

# Glass covers for refrigeration and chest freezers Quick

## The advantages at a glance

- Simple and quick retrofitting, energy efficient and guaranteed temperature safety
- Stable design, high-quality and long-lasting
- Suitable for plug-in refrigerators and chest freezers



## Quick - glass cover for plug-in chests

### Technical data

Width	800 mm - 1100 mm
Length	1200 mm - 2500 mm
Panes	4 mm single-pane safety glass
Glass type	flat
Pane surround	Framed with plastic profiles on all sides
Climate class	3L1 (25°C / 60% r.h / -18°C)
Frames	The frames lie on the top edge of the chest and are adapted to the shape of the chest. Each frame has two glass panes.
Handles	<b>RAL 3020</b>

\* As per DIN EN 23953 and also depending on the refrigeration cabinet type, refrigeration system, and number of times the cabinet is opened etc.




**40%<sup>\*\*</sup>**  
**to 50%**  
 ENERGY SAVINGS

**Quick: Glass cover for plug-in refrigerators and chest freezers**

Quick is suitable for the quick and simple retrofitting of plug-in refrigerators and chest freezers.

The high-quality and extremely stable design is very long-lasting.

The frames, each with two glass panes, lie on the top edge of the chest and are adapted to the shape of the chest.

Thanks to the high energy savings, retrofitting *Quick* pays for itself within a short space of time, making it a truly cost-effective investment.

# Product comparison for glass covers for refrigeration and chest freezers

	EcoFlex Push	EcoFlex Push t	EcoFlex Push 3	EcoFlex Push Combi
<b>Handrail profiles</b>	All-round aluminium handrail profile H = 65 mm			
<b>Handles</b>	RAL 7016			
<b>Beading profile</b>	RAL 7016			
<b>Cover width</b>	1700 - 2300 mm	1800 - 2100 mm	1700 - 2300 mm	800 - 1100 mm
<b>Cabinet length</b>	1875 mm, 2500 mm, 3750 mm (grid 625mm)			
<b>Cabinet type</b>	Floor cabinet, wall cabinet and end cabinet	Floor cabinet and end cabinet	Floor cabinet, wall cabinet and end cabinet	Floor cabinet, wall cabinet and end cabinet (special design)*
<b>Panes</b>	4 mm single-pane safety glass			
<b>Glass type</b>	Floor cabinet curved, end cabinet flat		Floor cabinet curved, end cabinet flat	curved, flat
<b>Opening dimensions</b>	1200 mm x (350 mm - 450 mm)	1200 mm x (500 mm - 600 mm)	1220 mm x 600 mm	1220 mm x (300 mm - 350 mm)
<b>Lighting</b>	LED lighting			
<b>Climate class</b>	3L1 (25°C / 60 % r.h. / -18°C)			
<b>Energy savings</b>	<b>40 - 50%</b>	<b>40 - 50%</b>	<b>40 - 50%</b>	<b>20 - 30%</b>

\* not suitable for all combination cabinets



EcoFlex Slide	EcoFlex Slide Combi	Quick
All-round aluminium handrail profile H = 65 mm		<div style="background-color: #cccccc; padding: 2px;">RAL 7035</div> <div style="background-color: #333333; color: white; padding: 2px;">RAL 7016</div>
<div style="background-color: #333333; color: white; padding: 2px;">RAL 7016</div>		Recessed handle <div style="background-color: #ff0000; color: white; padding: 2px;">RAL 3020</div>
<div style="background-color: #333333; color: white; padding: 2px;">RAL 7016</div>		-
1700 - 2300 mm	300 - 1100 mm	800 - 1100 mm
1875 mm, 2500 mm, 3750 mm (grid 625mm)		1200 - 2500 mm
Floor cabinet, wall cabinet and end cabinet	Floor cabinet, wall cabinet and end cabinet	all-round glazing/ unglazed
4 mm single-pane safety glass		4 mm single-pane safety glass
flat	flat	flat
550 mm x 800 mm	400 mm x 500 mm	-
LED lighting		-
3L1 (25°C / 60% r.h. / -18°C)		3L1 (25°C / 60% r.h. / -18°C)
<b>40 - 50%</b>	<b>20 - 30%</b>	<b>40 - 50%</b>

# REMIS - accessories

## for refrigeration cabinets and glass covers

### Handles for refrigerated wall multidecks

- User friendly and easy to clean
- Made from high-quality material, sit comfortably in the hand



#### Stainless steel look handle

##### Technical data

<b>Dimensions (L x W x H)</b>	275 x 30 x 45 mm
<b>Colour</b>	Stainless steel look
<b>Special feature</b>	Pleasant haptics thanks to special coating; thermally isolated
<b>Suitable for</b>	Safe TT, Safe Tmax, Safe Flex and Safe TS



#### Standard handle

##### Technical data

<b>Dimensions (L x W x H)</b>	275 x 30 x 45 mm
<b>Colour</b>	RAL 7004
<b>Special feature</b>	Pleasant temperature, robust and long-lasting
<b>Suitable for</b>	Safe TT, Safe Tmax, Safe Flex and Safe TS





## High-quality handle

Technical data	
Dimensions (L x W x H)	210 x 26 x 33 mm
Colour	Stainless steel look
Special feature	Panes are very easy to clean
Suitable for	Safe TT, Safe Tmax, Safe Flex and Safe TS

## Handle rings

Technical data	
Dimensions (Dia. / H)	67.5 mm / 18.0 mm (6.0 mm projecting)
Colour	RAL 7004
Special feature	Very robust and long-lasting / colour-stable
Suitable for	Safe TS



## Recessed handle

Technical data	
Dimensions (L x W x H)	198,3 x 40,0 x 8,0 mm
Colour	RAL 7040
Special feature	With finger protection; very low installation height with indication of sliding direction
Suitable for	Shelf (Basic, Comfort and Premium)

# REMIS - accessories

## for refrigeration cabinets and glass covers

### Handles for low refrigerated multidecks

- Simple handling and very stable
- Modern look combined with minimum space requirements

#### Technical data

Dimensions (L x W x H)	175 x 30 x 34 mm
Colour	RAL 7004
Special feature	Cannot be used incorrectly
Suitable for	Curve



## Handles for refrigeration and chest freezers

- Cannot be used incorrectly
- User friendly and easy to clean

Technical data	
Dimensions (L x W x H)	150 x 70 x 26 mm
Colour	RAL 7016
Special feature	Cannot be used incorrectly
Suitable for	EcoFlex systems (all except EcoFlex Push Combi)



Technical data	
Dimensions (L x W x H)	150 x 95 x 48
Colour	RAL 7016
Special feature	Cannot be used incorrectly
Suitable for	EcoFlex systems (all except EcoFlex Push Combi)

# REMIS - accessories for refrigeration cabinets and glass covers

## LED for refrigerated multidecks, refrigeration and chest freezers

- Energy savings of up to 60% compared to conventional lighting
- No UV and IR radiation
- Service life of up to 50,000 hours: this corresponds to a service life five times longer than conventional lighting
- More efficient product illumination (lumen/watts)
- Simple retrofitting/assembly
- Vertical, horizontal and centre bar lighting, handrail lighting integrated
- Special lengths possible
- Satisfies the most stringent safety standards



approx. 4000 kelvin

approx. 2700 kelvin

approx. 3000 kelvin



**Neutral white:**

Dairy products, drinks  
& non-food



**Yellow/orange:**

Pasta & cheese



**Red/dark red:**

Meat, ham  
& deli products



## LED for refrigerated multidecks

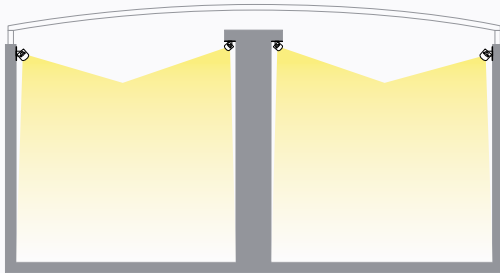


Vertical on the frame stand



Horizontal on the top of the cabinet

## LED for refrigeration and chest freezers



Horizontal on the chest wall

### LED lighting: Maximum energy efficiency combined with optimal product illumination

The energy efficiency of the REMIS glass cover systems is further enhanced by LED lighting.

The more even illumination of the goods has a positive effect on sales and since the LED lighting generates less heat, this results in improved temperature safety.

LED lighting also offers nume-

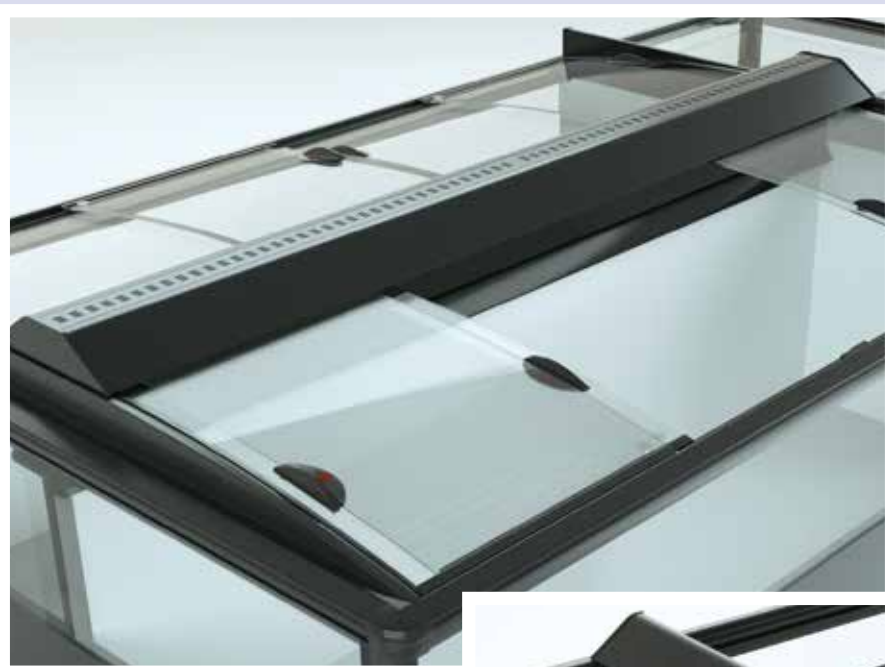
rous advantages when it comes to assembly. The flexible lengths, light intensities and colours can be customised to your displays. That means you can show off your products in their best light.

# REMIS - accessories

## for refrigeration cabinets and glass covers

### Ecoflex 3-fold price strips from REMIS

- Up to 3 scanner strips (40 mm) can be fitted
- Available in standard lengths of 1875 mm, 2500 mm, 3750 mm and in special lengths for end cabinets

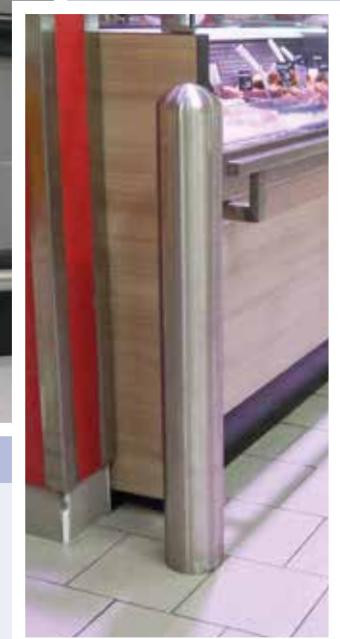




## RAIL PROTECTION: Impact protection

- Unique due to individual plug-in design
- Premium quality as made completely from stainless steel (incl. connectors/sleeves)
- Sophisticated, long-lasting design
- Simple assembly and disassembly: Only one drill hole per holder necessary
- No damage to the walls or cabinets
- Customisable set-up and finishing
- The rail protection can be easily removed and then reassembled for maintenance and conversion

Brushed stainless steel



### RAIL PROTECTION from brushed stainless steel

Article	Dimensions
<b>Rail</b>	Length 2490, outside dia. 51 mm
<b>Corner protection rail</b>	Length 510 mm / 90°, outside dia. 51 mm
<b>Connector sleeve</b>	Height 63 mm, outside dia. 53 mm
<b>Metal holder</b>	Outside dia. 53 mm
<b>Metal foot</b>	Height 285 mm, width 76 mm, inside dia. 20 mm
<b>Rubber stopper</b>	Height 58 mm, outside dia. 24 mm
<b>Corner protection device</b>	Width 159 mm, height 305 mm
<b>Impact protection</b>	Height 610 mm, outside dia. 102 mm Height 813 mm, outside dia. 102 mm

# REMIS - accessories

## for refrigeration cabinets and glass covers

### REMIglas care agents

- For maintaining the smooth-running function of glass covers
- Economical in use, the treated running surface remains smooth for up to 6 months
- Wipe away any excess with a cloth
- Clean dirty running surfaces in advance with a moist cotton or microfibre cloth



### REMIS bag holders

- Made from high-quality metal (Stainless steel look)
- Robust and long-lasting
- Simple to assemble



# Our commitment: REMIS Health-Centre e.V.

Our involvement in Gambia (West Africa) began in 2003 and came about from our many years of contact with Tengelmann AG and HCE (Hilfs-Center-Essen-Darsilami e.V.).

In cooperation with the ISET (Institute for solar energy supply technology at Kassel University), we implemented a project

to supply the children's ward in Darsilami (Gambia) with self-sustaining power by providing financial, technological and personnel resources, including on site. Since 2003, we have also organised annual fund-raising events for both this and connected projects in Darsilami.

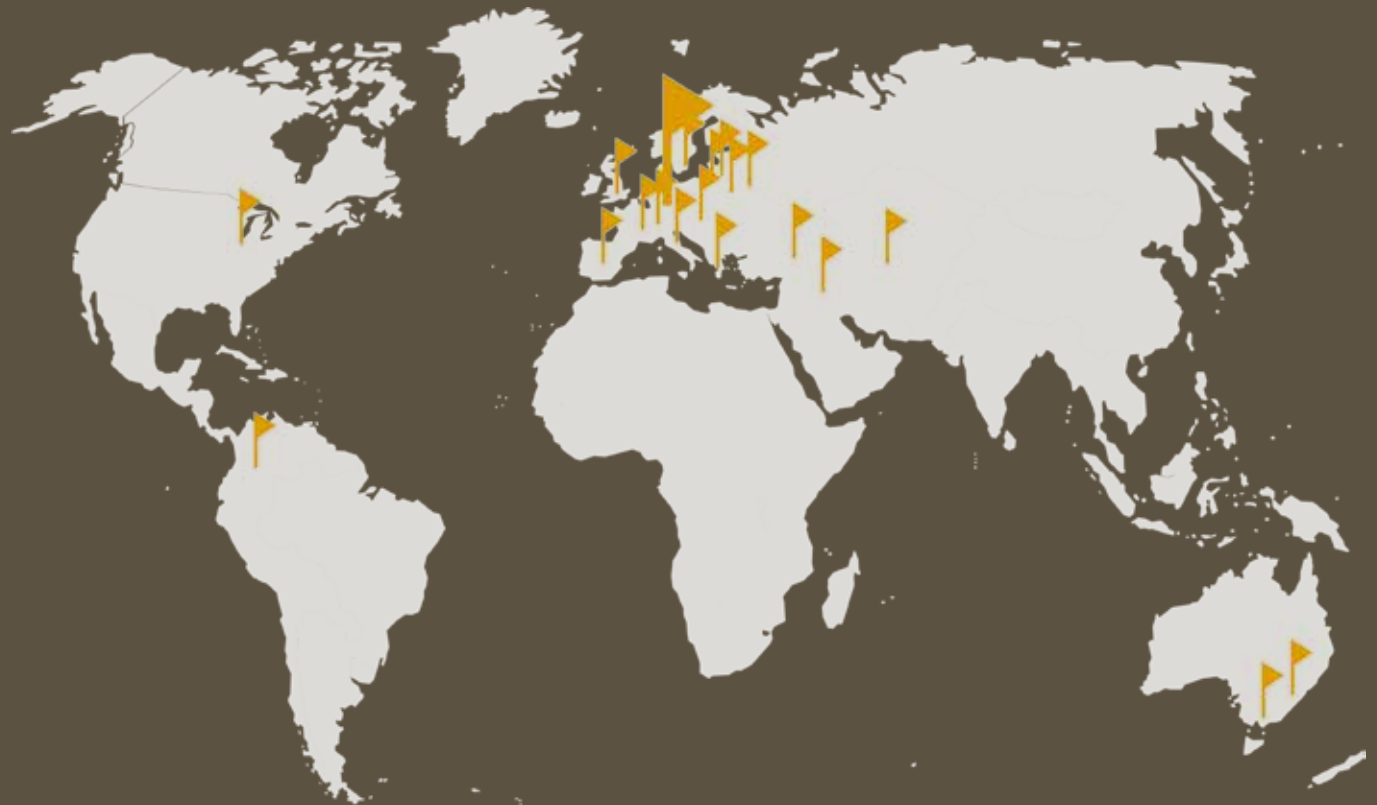
The focus of our work here is on

providing donations in order to maintain the health centre in the long term.

The association makes a monthly donation to Darsilami. This covers personnel costs - clinic management, nurses and carers - medication as well as the costs of new items.



[www.remis-darsilami.com](http://www.remis-darsilami.com)



**REMIS GmbH**

Mathias-Brüggen-Str. 67–69  
50829 Cologne, Germany

Tel.: +49 (0)221 / 7 88 80 - 0  
Fax: +49 (0)221 / 7 88 80 - 249

Web: [www.remiglas.de](http://www.remiglas.de)  
E-mail: [remis@remis.de](mailto:remis@remis.de)

